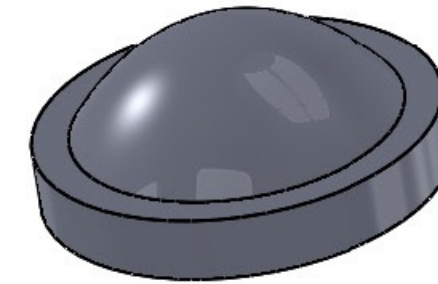


SECTION A-A



EFL@488nm = 2.888mm
EFL@546nm = 2.914mm

Notes:

- 1) Material: S-LAM60M
- 2) Clear Aperture: 3.60mm
- 3) Centration/Wedge: <2 arcmin
- 4) AR Coating: Reflectivity <0.5% from 405nm to 650nm per surface, coat both surfaces
- 5) Bevel Edges: 0.1 - 0.3mm max face width at 45°
- 6) All dimensions in mm unless noted

1208 Sigma CT.
Rockwall, TX 75087
Ph: (972) 722-1064
Web: www.archeroptx.com

Archer Optx
Optical Precision. Optimal Outcome.

PROPRIETARY AND CONFIDENTIAL
THE INFORMATION CONTAINED IN THIS
DRAWING IS THE SOLE PROPERTY OF
ARCHER OPTX, INC. ANY
REPRODUCTION IN PART OR AS A WHOLE
WITHOUT THE WRITTEN PERMISSION OF
ARCHER OPTX, INC. IS PROHIBITED.

UNLESS OTHERWISE SPECIFIED:		NAME	DATE	
DIMENSIONS ARE IN MM		DRAWN		
TOLERANCES:		CHECKED		
FRACTIONAL ±		ENG APPR.		
ANGULAR: MACH ± BEND ±		MFG APPR.		
TWO PLACE DECIMAL ±		Q.A.		
THREE PLACE DECIMAL ±		COMMENTS:		
INTERPRET GEOMETRIC TOLERANCING PER:		TITLE: P5528		
MATERIAL				
FINISH				
NEXTASSY	USED ON	SIZE B	DWG. NO. 102312-1	REV G
APPLICATION		SCALE: 10:1 WEIGHT:		SHEET 1 OF 1

DO NOT SCALE DRAWING